

Lady Blitz

Women's 6 oz. 100% polyester golf shirt featuring Tri-Mountain UltraCool® and antimicrobial technology. Accented with contrast panels along shoulders and sides for a sporty look. Rib collar, three-button placket, square bottom and open cuffs. Heat seal label for ultimate comfort.

SIZES:

XS | S | M | L | XL | 2XL | 3XL | 4XL



SIZE CHART

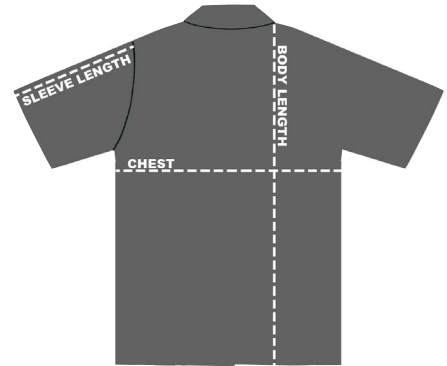
HOW TO MEASURE:

Smooth out wrinkles and lay garment flat on a table before measuring.

CHEST – Measure from 1" below armhole straight across chest.

SLEEVE LENGTH – Measure from top of armhole to sleeve opening.

BODY LENGTH – Measure from high point shoulder to sweep opening.



SIZE (Measurements in inches)	XS	S	M	L	XL	2XL	3XL	4XL
CHEST (1" below armhole)	17.5	18.5	19.5	21.5	23.5	25.5	28	30
SLEEVE LENGTH (from top of armhole)	7.5	8	8.25	8.5	8.75	8.75	9	9
BODY LENGTH (from high point shoulder)	23.5	24.5	25.5	27	28	29.5	31	32