

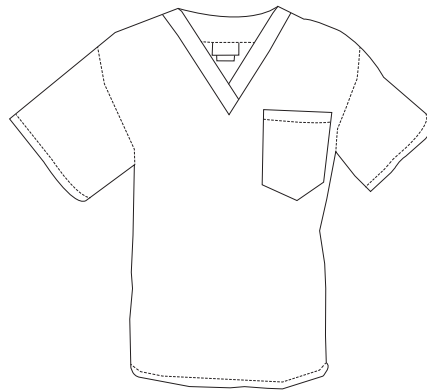


A traditional scrub fit, with single chest pocket.

Available blank or embellished

**Suggested Use:** General Practice, Hospitals, Schools, Veterinary, Assisted Living, Hospitality


**Suggested pairable scrub pants:** 330C, 306C, 313



- 65/35 PC Poplin
- Ultra brushed fabric
- Unisex
- V-neck
- Left chest pocket
- Set-in sleeves
- Fabric weight, 4.5 oz.

## FABRIC DETAILS

 **Ultra-Brushed Fabric** Easy care to keep your professional look.

 **Always Bright** Vibrant colors that stay fresh and true wash-after-wash.

 **Quality-made** Thoughtfully engineered to combine comfort and durability.

**PACKAGING:** Individually polybagged

## EMBELLISHMENT OPTIONS

- Embroidery
- Heat Transfer

Unisex Sizes: XXS -8X\*








\*6X - 8X available in limited colors

## COLOR OPTIONS

### Core

-  **Black**  
PMS Match\* Black 3C
-  **Ceil Blue**  
PMS Match\* 659C
-  **Wine**  
PMS Match\* 209C
-  **Royal Blue**  
PMS Match\* 2728C
-  **Navy Blue**  
PMS Match\* 282C

### Secondary

-  **Caribbean Blue**  
PMS Match\* 308C
-  **Purple**  
PMS Match\* 2745U
-  **Hunter Green**  
PMS Match\* 568C
-  **Grey**  
PMS Match\* 430C
-  **Teal**  
PMS Match\* 322C
-  **White**  
PMS Match\* White
-  **Khaki**  
PMS Match\* 4525U

SIZE	XXS	XS	S	M	L	XL	2X	3X	4X	5X	6X	7X	8X
CHEST	31-33	34-36	37-39	40-44	45-47	48-50	51-53	54-56	57-59	60-63	64-67	68-70	71-73